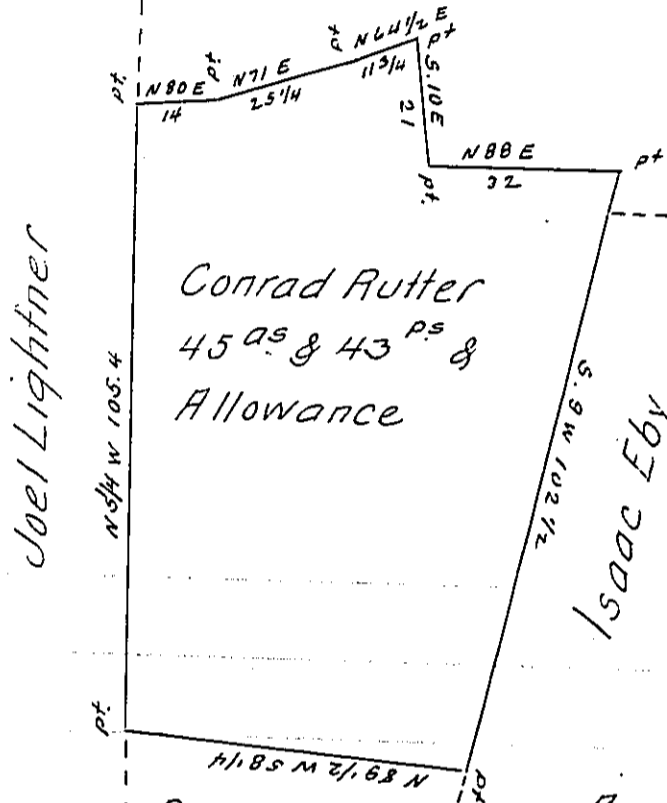


Nathaniel Ellmather  
tract now  
Part of the same



A Draught of a Tract of Land situate  
in L<sup>e</sup>cock Township in the County  
of Lancaster. Containing forty five  
Acres and forty three perches & Allowance  
of six ~~8~~ C<sup>t</sup> for roads &c. being part of five  
hundred and eighty eight Acres & Allowance  
Surveyed in pursuance of a Warrant dated the 3<sup>rd</sup>  
day of January 1733 granted to Conrad Rutter.

Surveyed August-1818 for Joel Lightner

To Jacob Spangler Esq<sup>r</sup> }  
Surveyor General

Jacob Hibshman D. S.

IN TESTIMONY that the above is a copy of the original remaining on file in  
the Department of Internal Affairs of Pennsylvania, made  
conformably to an Act of Assembly approved the 16th day of  
February, 1833, I have hereunto set my Hand and caused  
the Seal of said Department to be affixed at Harrisburg,  
this thirty first day of July 1906.

*Isaac P. Brown*  
Secretary of Internal Affairs.